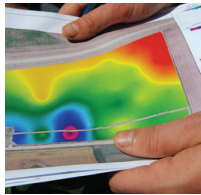


CHS YieldPoint® Mapping & Prescription Writing



Good mapping is critical if you want to follow best management practices. Utilizing variable rate application, satellite and aerial imagery, along with precision hardware and local field knowledge and history, we will help you maximize results for the appropriate field boundaries or zones. We will overlay proper agronomic and environmental data in order to achieve layered mapping, then create a data file that transfers maps to the applicator.

CHS YieldPoint® specialists can help you succeed with:

- Setting up zones or grids
- Mapping lab results
- Determining field boundaries
- Digitizing
- Creating variable-application maps
- Developing seed and soil amendments
- Non-application maps

Ask us about:

- Nitrogen mapping
- Combine yield clean-up
- Variable rate seeding mapping
- Macro- and micro-nutrient mapping
- EC mapping
- Net-profit maps
- Customized mapping application
- Water management

Discover the CHS YieldPoint® solution for success. We will help you increase profit potential with leading precision ag offerings through local experts with global connections.

CHS YieldPoint® specialists help you succeed with:

- CHS YieldPoint Sampling – Grid and zone sampling
- CHS YieldPoint Prescriptions – Planting and fertilizer prescriptions
- CHS YieldPoint Tissue Sampling – Crop tissue sampling
- CHS YieldPoint VRT Spreading – Variable rate spreading of single or double products
- CHS YieldPoint Mapping – Planter and harvest mapping
- CHS YieldPoint Water Management – Integrated system approach to maximize water use
- CHS YieldPoint Data Management – From consolidating records to evaluating performance and setting plans

Gain these benefits for your operation:

- In-depth reports on grower, farm, field or operational failures and successes
- Access to pooled data (providing a larger, more accurate database)
- Seed selection advice gathered from multiple experiences with hybrids in your region
- Industry-leading local data on new products gathered through our YieldPoint field trials process
- Ability to manage risk with more accurate information
- Prescriptions based on local data
- Relationships with local advisors

